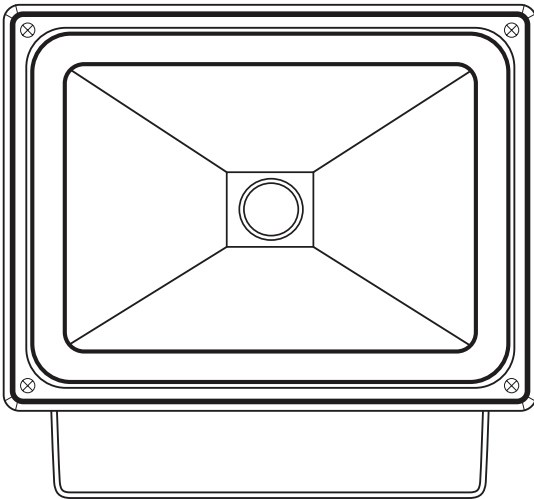


Forta LED Floodlight

Instruction Manual

Cat. No: **LFL0110WBL, LFL0120WBL, LFL0130WBL, LFL0140WBL**

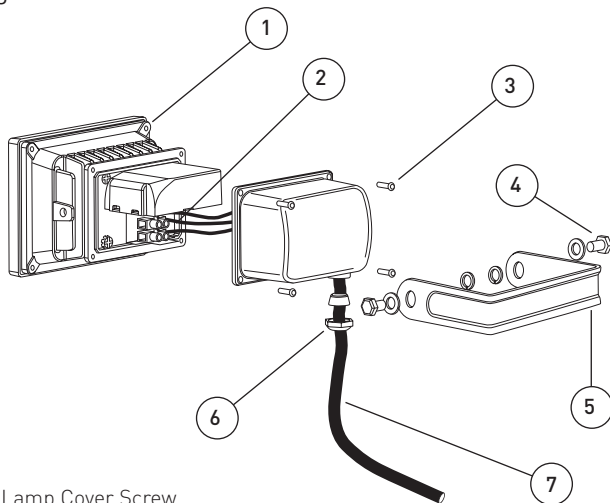


1 Specification

Cat. No.	LFL0110WBL	LFL0120WBL	LFL0130WBL	LFL0140WBL
Nominal Input Voltage	230-240 V a.c 50 Hz			
Input Power	11 W	23 W	32 W	43 W
Lumens Output	730 lm	1040 lm	2250 lm	3000 lm
Colour Temperature	Cool White 4000K (Nominal)			
Protection Class	Class 1			
Lens/Glass	>2m (recommended)			
IP Rating	IP44			
Dimensions	115 x 87 x 130 mm	180 x 140 x 135 mm	228 x 188 x 175 mm	228 x 188 x 175 mm
Weight (excl.packaging)	0.6 kg	0.9 kg	1.5 kg	1.6 kg
Power cord requirement	H05RN-F 3G 1mm ² (not included)			

Read all the instructions before installation. This instruction manual is to be left at the installation site. These floodlights must be installed by a licensed electrician.

Fig 1



- 1 Lamp Cover Screw
- 2 Terminal Block
- 3 Junction Box Cover Screws (x 4pcs)
- 4 Wall Mounting Bracket Screws (x 2pcs)
- 5 Wall Mounting Bracket
- 6 Gland
- 7 Power Cable (not included)

2 Installation

Installing a wall switch adjacent to the power source is recommended.

1. Remove mounting bracket from the fitting and use to mark position on the wall/ceiling.
2. Mount the bracket on the wall/ceiling. Ensure the method of fixing can support up to a 10kg weight.
3. Reattach fitting to the bracket.* Do not tighten bolts completely to allow for mains wiring termination.

* Ensure that cord gland faces downwards in the final mounting position (as shown in Fig.1).

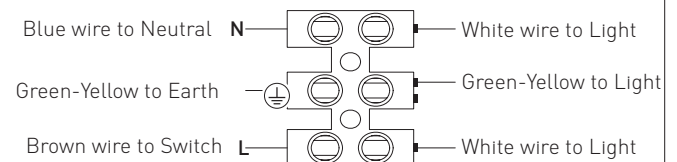


Fig 2

4. Choose rubber-sheathed 3-core circular cord, H05RN-F 3G 1mm² (not supplied) for the mains wiring.
5. Remove junction box cover, strip insulation from cord and insert into cord gland. Wire up as shown in Fig 2.
6. Replace junction box and tighten screws to ensure a weatherproof seal. Tighten gland.
7. Orient fitting to desired position and tighten bolts completely.

3 Where to mount your flood light

1. Installation is to be made in dry weather conditions.
2. Choose a wall mount position that is in a sheltered location (e.g under the eaves of the house). A mounting height of greater than 2m is recommended.
3. Do not operate in close proximity to combustible materials or substances affected by heating or drying. Keep a minimum distance of 0.5m from adjacent objects.

4 Product Notes

1. This product must be installed and used as per these instructions.
2. This product contains no serviceable parts and no attempt should be made to repair this product. If the product is faulty it should be discarded.
3. This product has been designed to operate in ambient temperatures -10°C to +40°C.
4. This product is not suitable for use in hazardous environments and/or corrosive areas.
5. An IP rating of IP44 is generally considered suitable for external walls with supplementary protection such as overhanging eaves.
6. The material in this product may vary in colour from batch to batch. Colour matching from one batch to another cannot be guaranteed.
7. Extended exposure to UV rays (such as exposure to direct sunlight) may cause discolouration of this product.
8. This product is not suitable for marine environments such as areas subject to salt spray and/or mist.
9. This product utilises intellectual property in the form of registered designs, trademarks, and/or patents. Such intellectual property remains the property of Legrand in all cases.
10. Legrand reserves the right to modify the specification of this product at any time.

Warranty

Legrand warrants this product for a period of 3 years from the date of purchase. These goods come with guarantees that cannot be excluded under the Australian and New Zealand Consumer Laws. You are entitled to a replacement or a refund for a major failure and for compensation for any other reasonably foreseeable loss or damage. You are also entitled to have the goods repaired if the goods fail to be of acceptable quality and the failure does not amount to a major failure.

See the Warranty card enclosed with this product for further details.

Customer Service

For all Customer Service and Technical Support please call Monday to Friday during business hours.

Legrand Australia
1300 369 777
www.hpm.com.au

Legrand New Zealand
0800 476 009
www.hpm.co.nz

ABN: 31 000 102 661

